

# MD-CC30x-001 USB to SPI Electrically Isolated Communications Converter

## Driver Installation Procedure



These Installation procedures are written for Microsoft Windows XP Service Pack 2 or greater.

The installation of the MD-CC30x-001 requires the installation of two sets of drivers, which may be downloaded from <http://www.imshome.com>:

- Drivers for the IMS USB to SPI Converter Hardware.
- Drivers for the Virtual Communications Port (VCP) used to communicate to your IMS Product.

Therefore the Hardware Update wizard will run twice during the installation process.

The full installation procedure will be a two-part process: Installing the Cable/VCP drivers and Determining the Virtual COM Port used.

### Installing the Cable/VCP Drivers

- 1) Download drivers from [http://www.imshome.com/cable\\_drivers.html](http://www.imshome.com/cable_drivers.html).
- 2) Extract the driver files from the \*.zip archive, remember the extracted location.
- 3) Plug the USB Converter Cable into the USB port of the MD-CC30x-001.
- 4) Plug the other end of the USB cable into an open USB port on your PC.
- 5) Your PC will recognize the new hardware and open the Hardware Update dialog.
- 6) Select "No, not this time" on the radio buttons in answer to the query "Can Windows Connect to Windows Update to search for software?" Click "Next" (Figure 1).



Figure 1: Hardware Update Wizard

- 7) Select "Install from a list or specific location (Advanced)" on the radio buttons in answer to the query "What do you want the wizard to do?" Click "Next" (Figure 2).

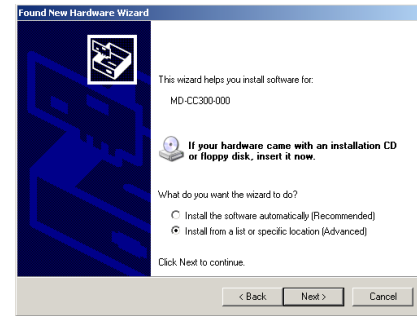


Figure 2: Hardware Update Wizard Screen 2

- 8) Select "Search for the best driver in these locations."
  - (a) Check "Include this location in the search."
  - (b) Browse to the location where you extracted the files in Step #2.
  - (c) Click Next (Figure 3).

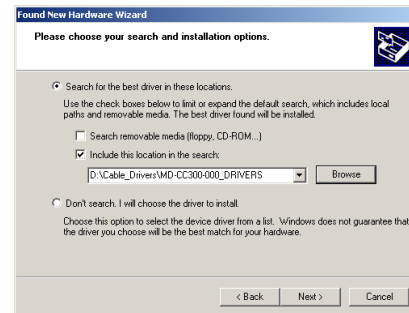


Figure 3: Hardware Update Wizard Screen 3

- 9) The drivers will begin to copy.
- 10) On the Dialog for Windows Logo Compatibility Testing, click "Continue Anyway" (Figure 4).

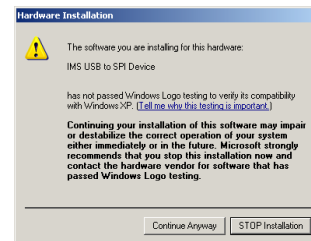


Figure 4: Windows Logo Compatibility Testing

- 11) The Driver Installation will proceed. When the Completing the Found New Hardware Wizard dialog appears, Click "Finish" (Figure 5).

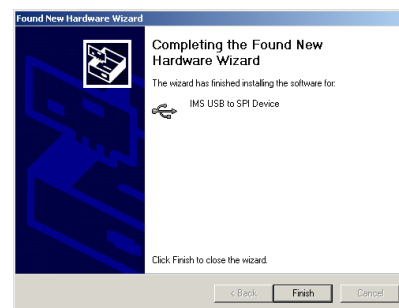


Figure 5: Hardware Update Wizard Finish Installation

- 12) Upon finish, the Welcome to the Hardware Update Wizard will reappear to guide you through the second part of the install process. Repeat steps 6 through 11 above to complete the cable installation.
- 13) Your IMS MD-CC30x-001 is now ready to use.

## Determining the Virtual COM Port (VCP)

The MD-CC30x-001 uses a Virtual COM Port to communicate through the USB port to the MDrivePlus or MForce. A VCP is a software driven serial port which emulates a hardware port in Windows.

The drivers for the MD-CC30x-001 will automatically assign a VCP to the device during installation. The VCP port number will be needed when IMS Terminal is set up in order that IMS Terminal will know where to find and communicate with your IMS Product.

To locate the Virtual COM Port.

- 1) Right-Click the "My Computer" Icon and select "Properties".
- 2) Browse to the Hardware Tab (Figure 6), Click the Button labeled "Device Manager".

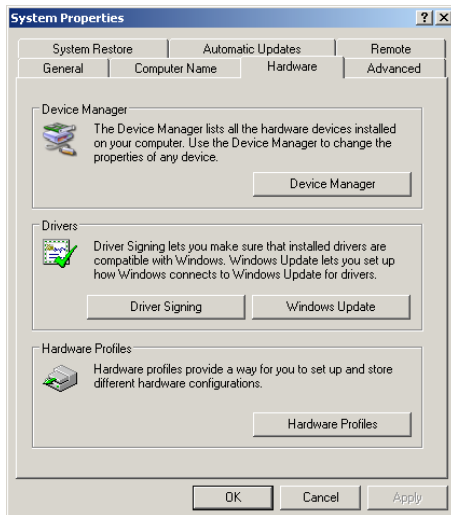


Figure 6: Hardware Properties

- 3) Look in the heading "Ports (COM & LPT)" IMS USB to SPI Converter Cable (COMx) will be listed (Figure 7). The COM # will be the Virtual COM Port connected. You will enter this number into your IMS SPI Motor Interface Configuration.

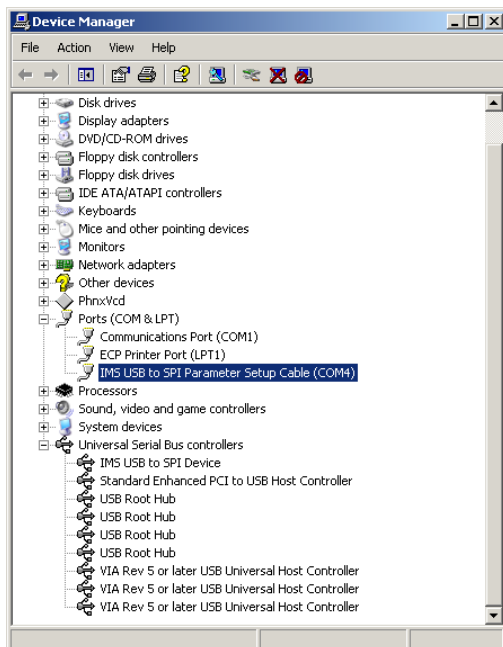


Figure 7: Windows Device Manager